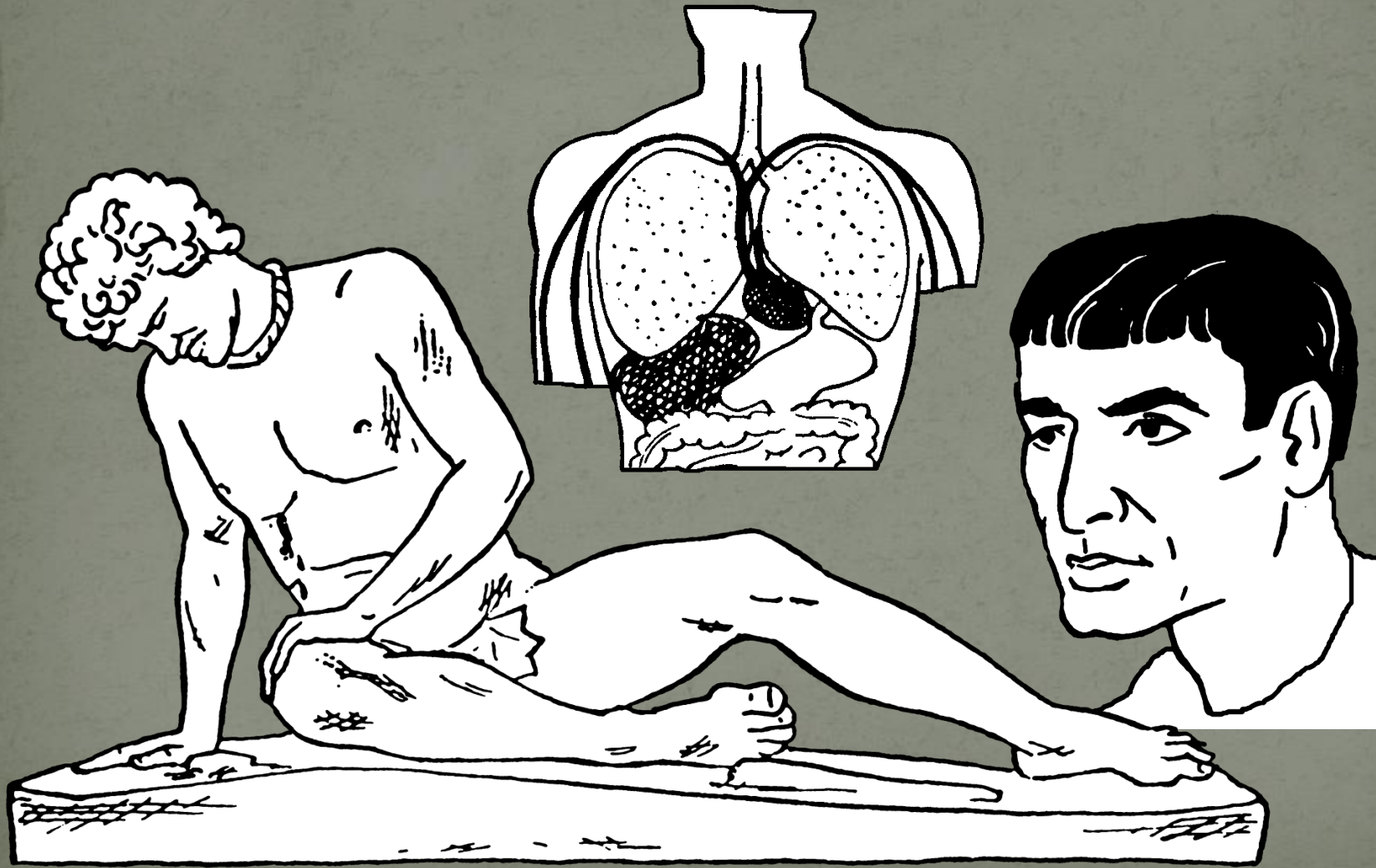


# CORPVS HVMANVM

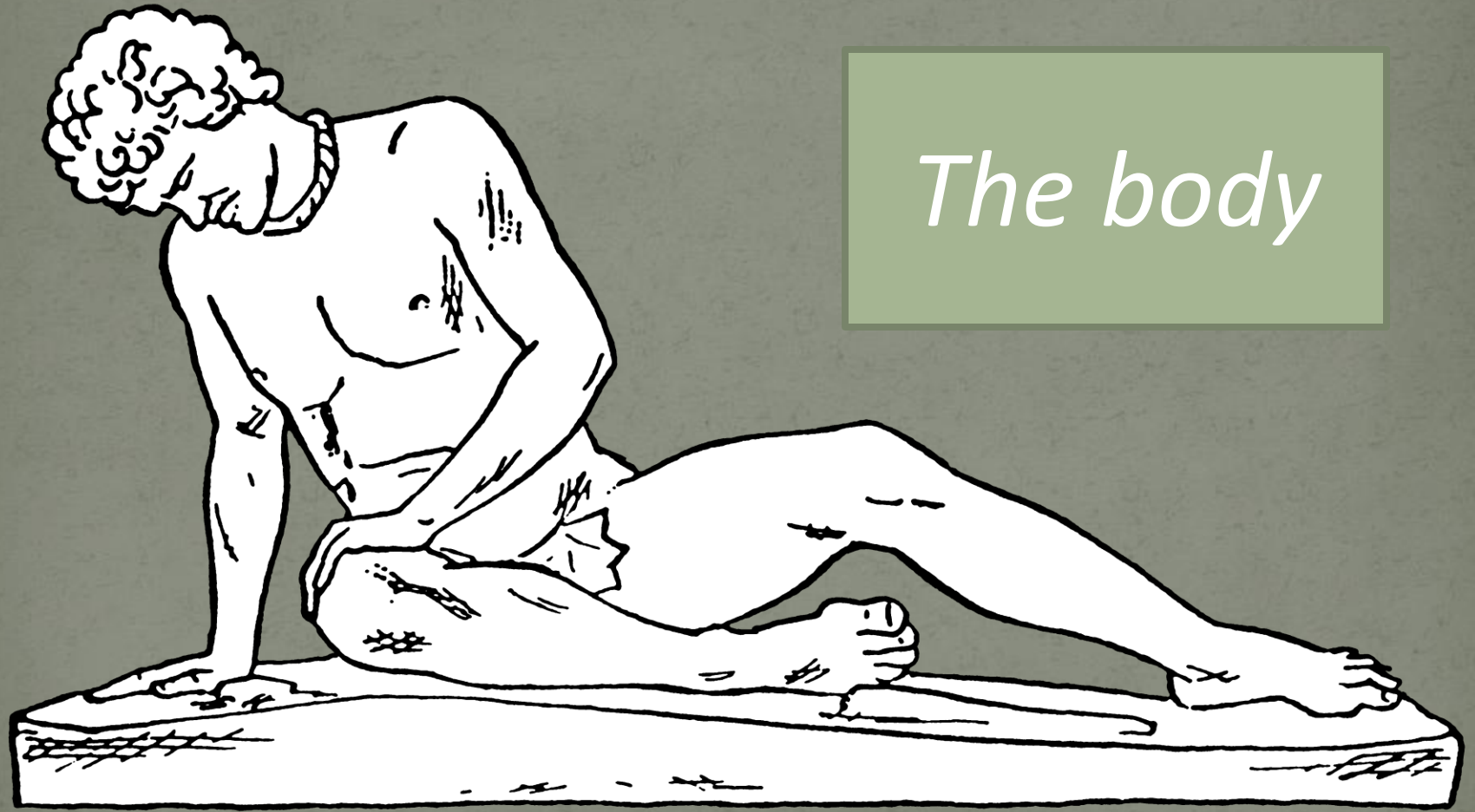
---

Identifying the parts of the body—Latīnē!

# QVAE SVNT PARTES CORPORIS?



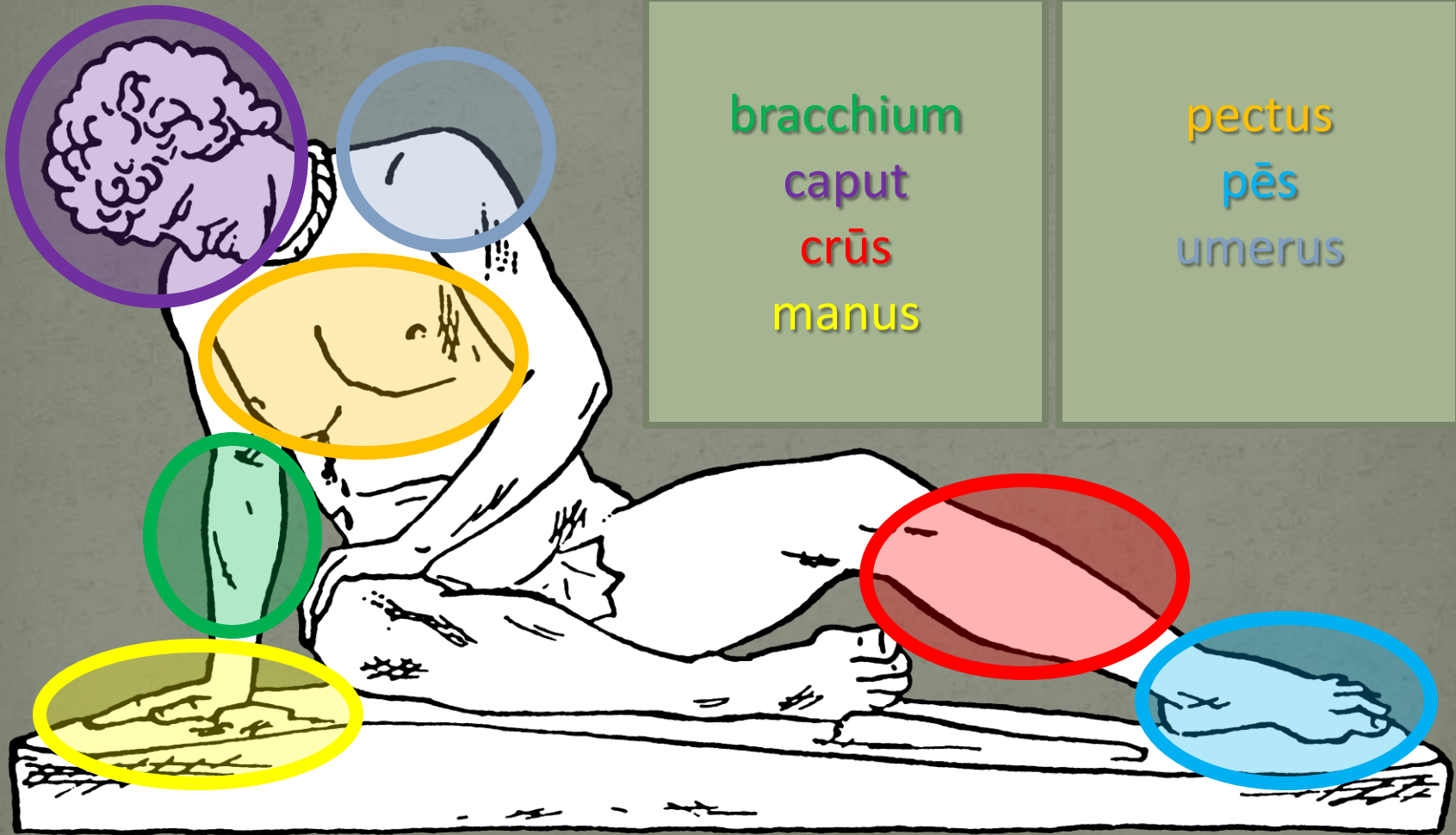
# PARTES CORPORIS



*The body*



# PARTES CORPORIS



bracchium  
caput  
crūs  
manus

pectus  
pēs  
umerus

# PARTES CAPITIS

*The  
human  
head*

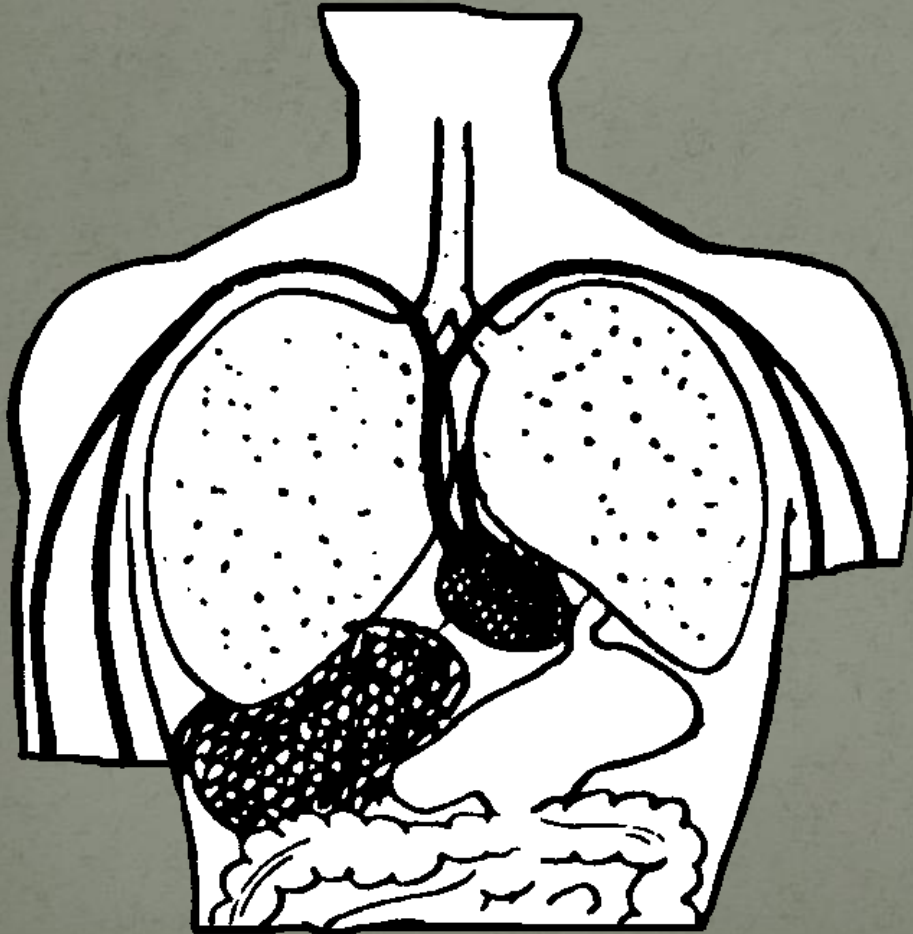


# PARTES CAPITIS

auris  
capillus  
collum  
frōns  
gena  
labrum  
oculus  
ōs



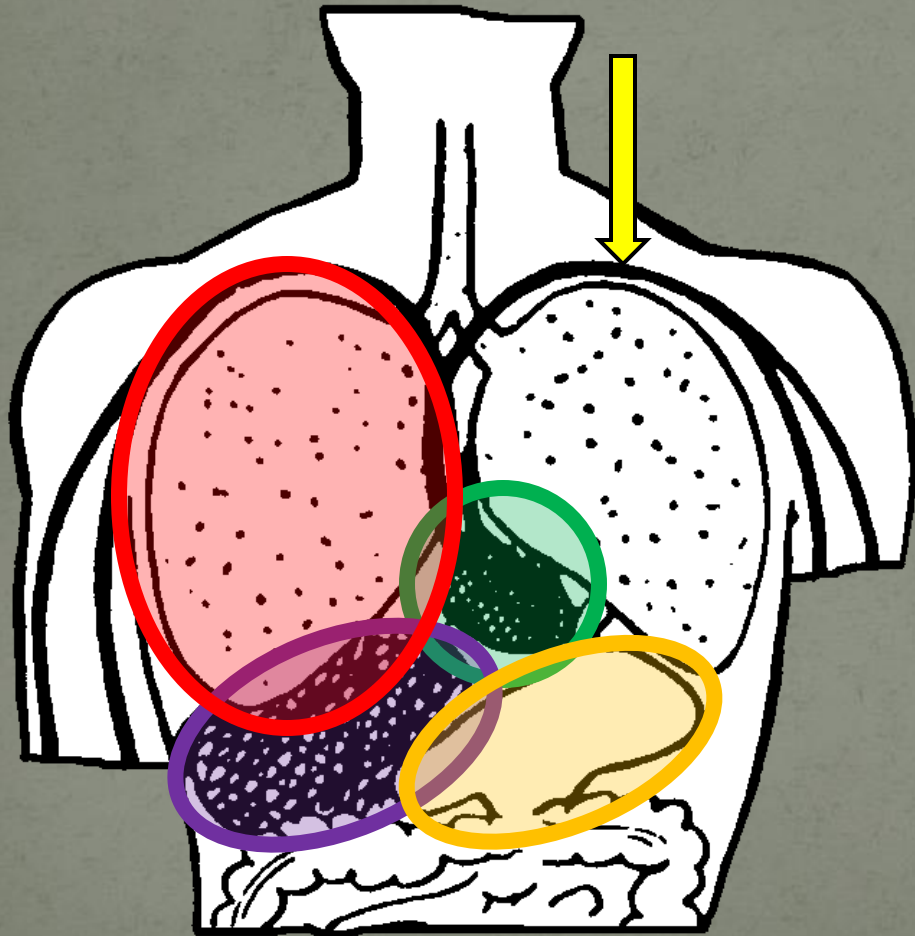
# VISCERA HVMANA



*The  
internal  
organs*



# VISCERA HVMANA



cor  
iecur  
pulmō  
vēna  
venter



HAE SVNT PARTES CORPORIS!

